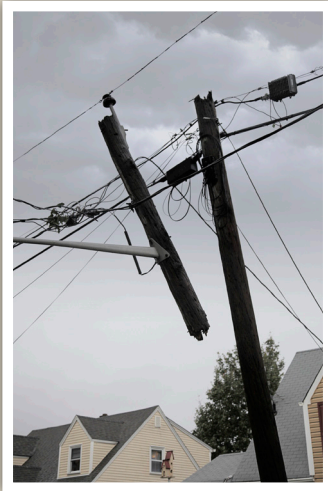


UNEXPECTED USAGE PROTECTION PLAN

There may be times throughout a given year that your generator turns on for an extended period of time due to a power outage. You want to be prepared. Having us perform our protection and maintenance plan will ensure you are ready for the worst.

*Don't get stuck in the dark.
Let us help ensure your
generator is in top shape!*



berico.com / 336-273-8663
alamanceoilco.com / 336-226-9371
carolinafuels.com / 336-623-9741

Don't Be Left in the Dark

Rely on Generators &



Annual Protection & Maintenance Plan



BENEFITS of a PROTECTION PLAN

Discover the benefits!

It is critical that an annual tune-up is conducted on your generator to help prepare for power outages.

Our Generator protection plans have been designed with you in mind:

- ▶ Help prevent costly repairs
- ▶ Extend the lifetime of your generator
- ▶ Provide you with peace of mind
- ▶ Insure operation when your power goes out

Benefits Include

Annual Tune-up (see checklist)

20% Off Repairs

20% Off Diagnostics

Priority Service

\$50 Bonus Bucks each renewal

Auto Renewing so you don't worry

— We will call/email you to schedule

100% Satisfaction Guaranteed

If for any reason you are not satisfied with a repair, we will return to fix it and will not leave until you are completely satisfied.



PROTECTION PLAN COVERAGE

Our plan includes an annual maintenance visit. Secondary visit may be added upon request at prevailing rates. Comprehensive service includes:

- ▶ Inspect fuel lines & connections
- ▶ Inspect flexible fuel lines
- ▶ Inspect oil level
- ▶ Replace oil
- ▶ Replace oil filter
- ▶ Inspect/clean enclosure louvers
- ▶ Inspect for vibration, noise, leakage, temperature
- ▶ Inspect/clean battery, remove corrosion, ensure battery dryness
- ▶ Clean and tighten battery terminals
- ▶ Check battery charge state
- ▶ Inspect/replace (if necessary) electrolyte level
- ▶ Inspect battery cable, remove corrossions, clean and tighten cable.
- ▶ Inspect air cleaner
- ▶ Inspect spark plug(s)
- ▶ Apply corrosion inhibiting spray to engine parts
- ▶ Inspect electrical connection box, including tightening terminals, checking for proper operation and checking control wiring
- ▶ Inspect entire electrical system
- ▶ Start & test generator operation

If necessary on liquid cooled generators:

- ▶ Check generator cooling system, hoses and belts
- ▶ Inspect generator coolant level and top off
- ▶ Distributor cap and rotor check
- ▶ Plugs, plug coils, and plug wire's check

PLEASE NOTE:

Additional maintenance or repairs discovered on service visits will be subject to standard rates with a 20% discount.